

# WS-Design Wall panels





# WS-Design Wall panels

In our standard range there are a handful of different versions of WS-Design, all with a unique laminate where the structure matches the decor. For those projects where you are looking for something completely unique, we have access to a large number of decors from the majority of laminate manufacturers. In addition to this, there is also the option of, among other things, a fire-rated core and matching edging. WS-Design is installed quickly and smoothly with our profile system which, in addition to providing a hidden installation, can also be installed with both an open and closed joint.

## WS-PANELER

Ribbon-Design is part of the product portfolio Wallsystems by Glimakra of Sweden. We are a Swedish company with value-driving factors such as Scandinavian acoustic design, greater flexibility and higher quality. Based on these, we create favorable sound landscapes for different types of environments. With broad knowledge and long experience, we develop and manufacture products in our own factories in Glimåkra and Tranås. We are the largest in Sweden for wood veneer / high-pressure laminate and through an ongoing collaboration with several prominent designers, we are always at the forefront when it comes to acoustic design.

## TECHINICAL INFORMATION

Surface layer	HPL
Sheet material	12 mm MDF
Edging	ABS
Structure	Matchande aktuell dekor
Thickness	13 mm
Standard size in stock	2400x600mm, 2960x600mm
Standard size not in stock	2400x1200mm, 2960x1200mm
Other sizes	On request
Mounting	Hidden profile system
Manufacturing	Tranås

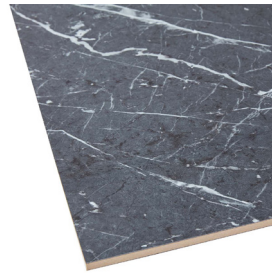
## SUSTAINABILITY

The panels are manufactured at our factory in Tranås. We only work with suppliers who work for sustainable forestry.

## FIRE PROPERTIES

Standard range:	D-class
FR (FR=Fireclass):	Bs1-d0 or Bs2-d0

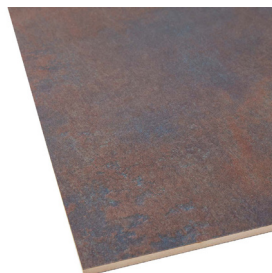
## STANDARD RANGE



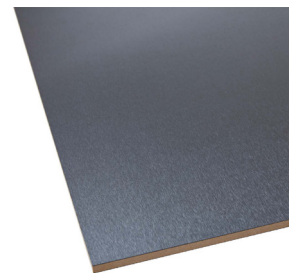
Alicante



Black slate



Corten



Saturno



Zement



# WS-Design Wall panels

